

WBS PROJECT: ISP.20641.3

CONTRACT: DA00521

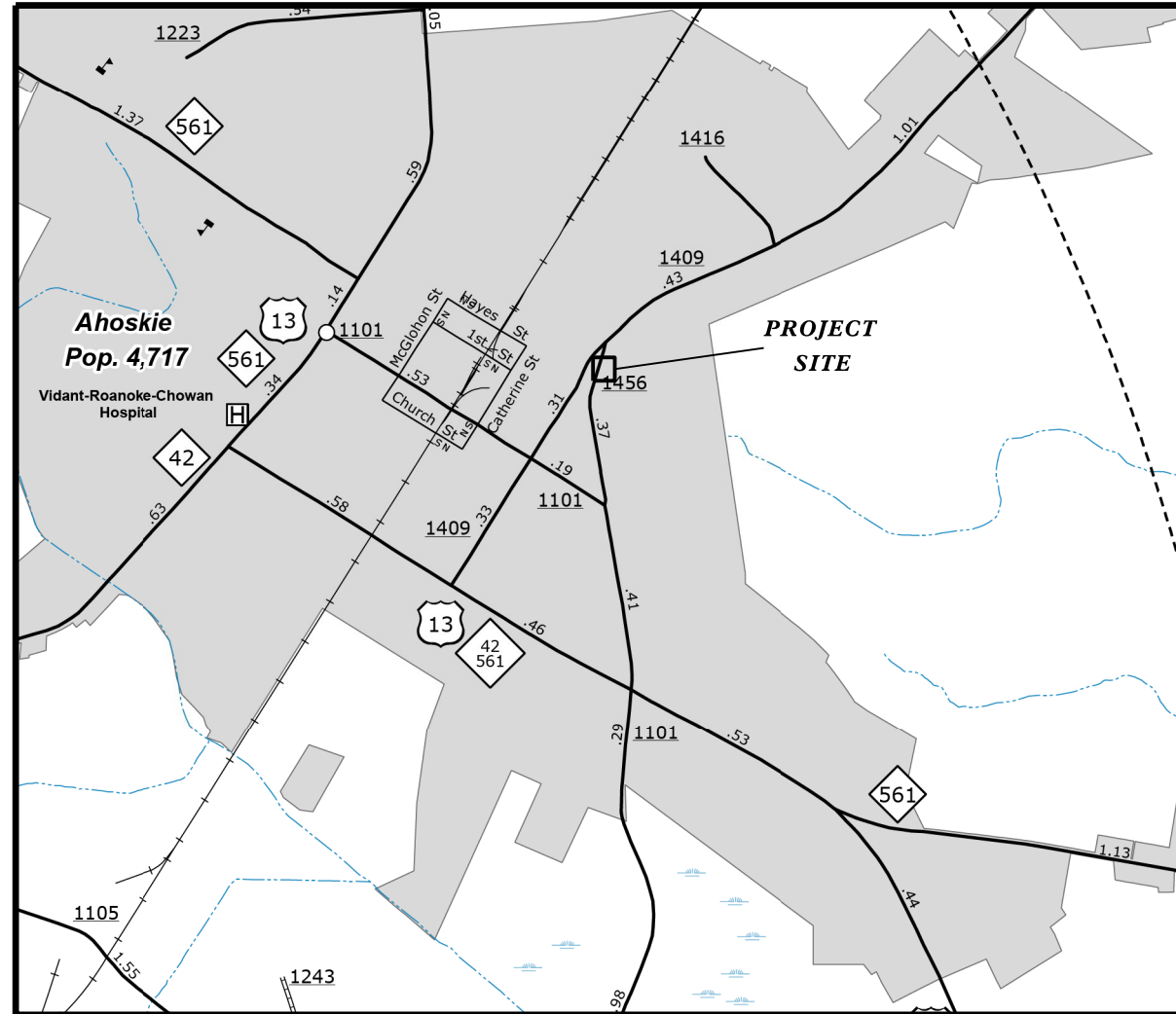
STATE OF NORTH CAROLINA
DIVISION OF HIGHWAYS

HERTFORD COUNTY

**LOCATION: INTERSECTION OF SR 1456 (CATHERINE'S CREEK RD)
& EAST HAYES ST**

TYPE OF WORK: STORM SEWER REPAIR

STATE	STATE PROJECT REFERENCE NO.	SHEET NO.
N.C.	1SP.20461.3	1
	STATE PROJ. NO.	DESCRIPTION
	1SP.20461.3	PE, CONST



UTILITY OWNERS:

- WATER : TOWN OF AHOSKIE
- SEWER : TOWN OF AHOSKIE
- CATV : CHARTER COMMUNICATIONS
- PHONE : CENTURY LINK
- POWER : DOMINION POWER OF NC
- GAS : PIEDMONT NATURAL GAS

GRAPHIC SCALES

NTS

PROJECT LENGTH

LENGTH OF PROJECT = 0.015 MILES

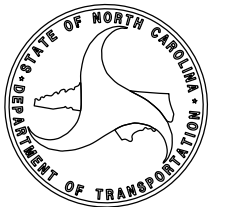
Prepared in the Office of:
DIVISION OF HIGHWAYS
113 AIRPORT DR., EDENTON, NC, 27932

2018 STANDARD SPECIFICATIONS

W.B. HOBBS, P.E.
DIVISION PROJECT TEAM LEAD

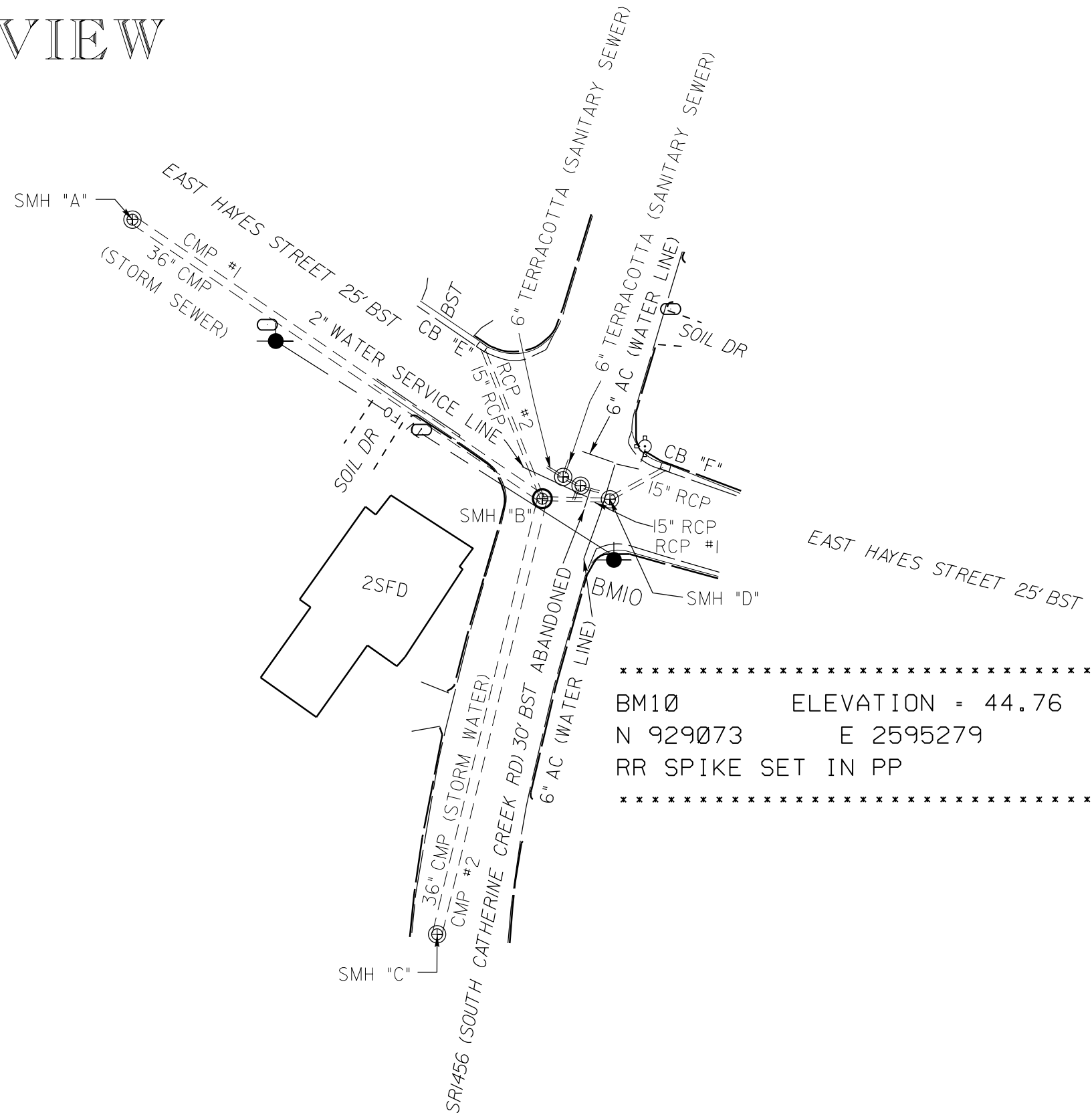
CHRIS SLACHTA
DIVISION PROPOSALS ENGINEER

DESIGN ENGINEER



PLAN VIEW

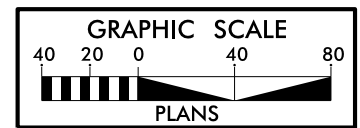
PROJECT REFERENCE NO. <i>ISP.20461.3</i>	SHEET NO. 2
RW SHEET NO.	
ROADWAY DESIGN ENGINEER	HYDRAULICS ENGINEER
DOCUMENT NOT CONSIDERED FINAL UNLESS ALL SIGNATURES COMPLETED	



* * * * *
 BM10 ELEVATION = 44.76
 N 929073 E 2595279
 RR SPIKE SET IN PP
 * * * * *

LEGEND:

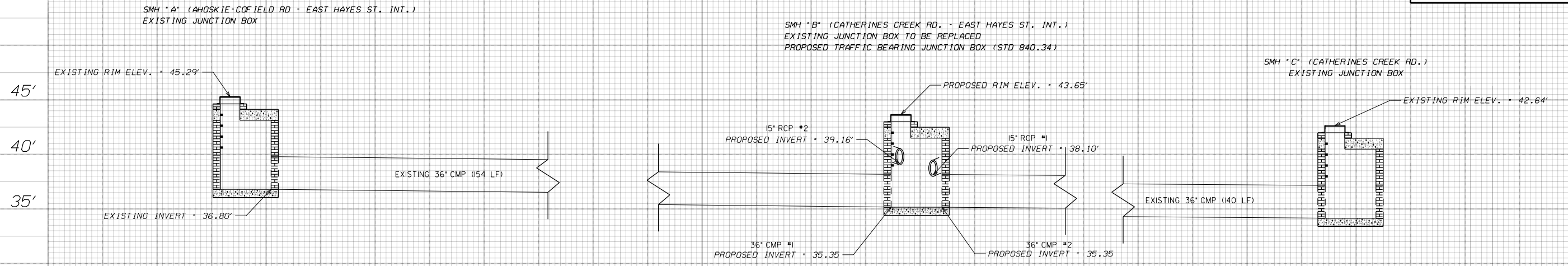
- ⊕ EXISTING MANHOLE
- ⊕ PROPOSED MANHOLE
- EXISTING POWER POLE
- EXISTING CATCH BASIN
- EXISTING WATER METER
- ⊕ EXISTING FIRE HYDRANT



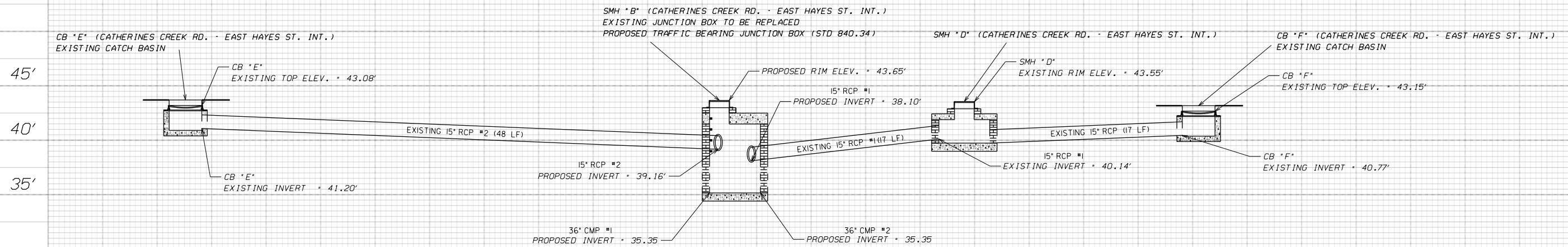
REVISIONS

PROFILE LINE 1 (36" CMP)

ISP 20461.3		SHEET NO.
		3
ROADWAY DESIGN ENGINEER	HYDRAULICS ENGINEER	
DOCUMENT NOT CONSIDERED FINAL UNLESS ALL SIGNATURES COMPLETED		



PROFILE LINE 2 (15" RCP)

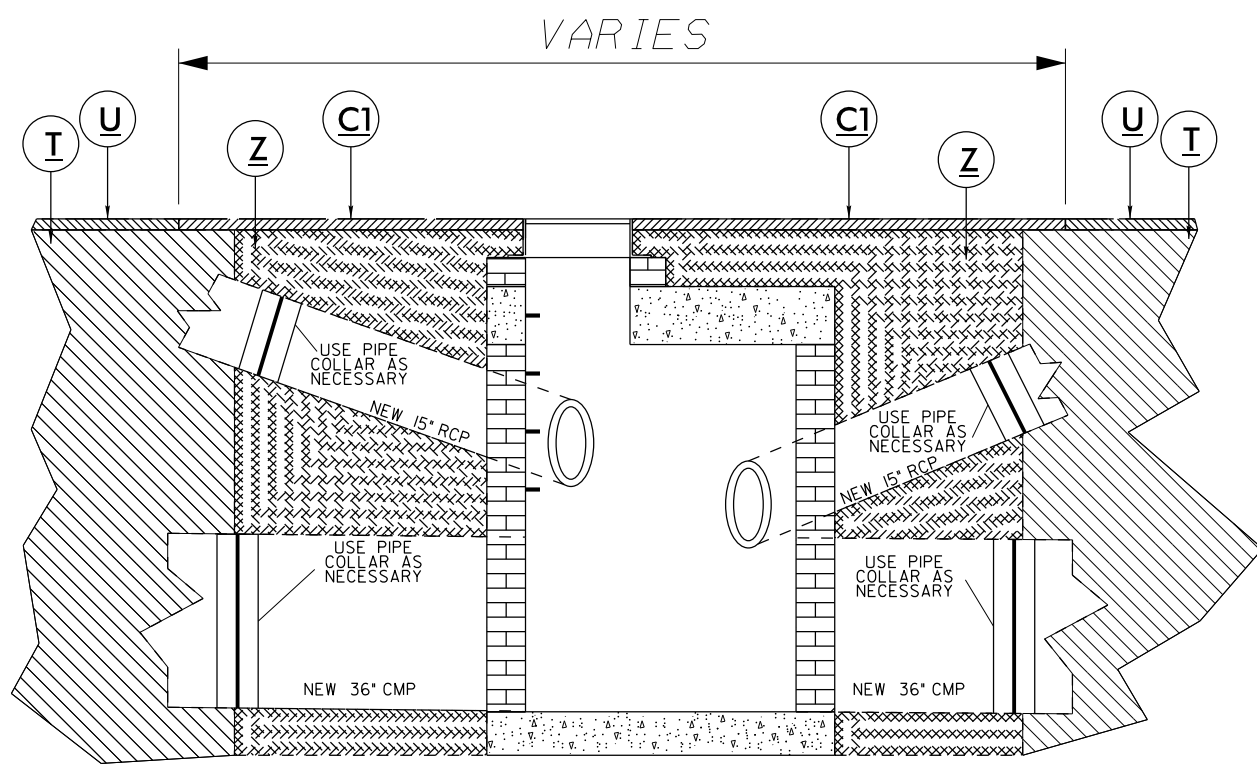


P A V E M E N T S C H E D U L E

C1	PROP. APPROX. 3.0" ASPHALT CONCRETE SURFACE COURSE, TYPE S9.5B, AT AN AVERAGE RATE OF 168 LBS. PER SQ. YD IN EACH OF TWO LAYERS (ASPHALT PLANT MIX, PAVEMENT REPAIR)
U	EXISTING PAVEMENT.
T	EXISTING EARTH MATERIAL.
Z	PROP. ABC STONE BACKFILL (SELECT MATERIAL CLASS IV).

NOTES:

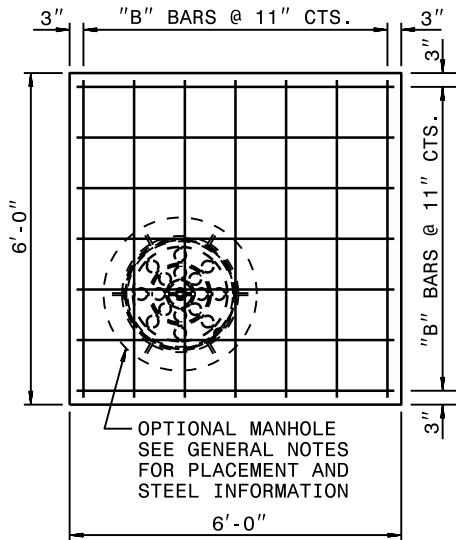
- *STORM WATER MANHOLE "B" SHALL BE REMOVED IN ITS ENTIRETY.
- *RECONSTRUCTION OF STORM WATER MANHOLE "B" SHALL BE IN ACCORDANCE WITH STD DWG 840.34.
- *CONTRACTOR SHALL INSPECT STORM WATER PIPES CONNECTING TO SMH "B". DAMAGED OR DETERIORATED PIPE SHALL BE REMOVED AND REPLACED WITH NCDOT PROVIDED PIPE.
- *PIPE COLLARS TO CONNECT NEW PIPE TO EXISTING SHALL BE ACCORDANCE WITH STD DWG 840.72.
- *EXISTING UTILITY LOCATIONS SHOWN FOR REFERENCE ONLY. CONTRACTOR SHALL VERIFY UTILITY LOCATIONS PRIOR TO CONSTRUCTION.
- *CONTRACTOR TO BACK FILL ALL EXCAVATIONS WITH ABC STONE AND CAP THEM WITH 3" OF S9.5B ASPHALT.
- *3.0" OF S9.5B TO BE APPLIED IN 2 1.5" LIFTS
- *EXCAVATIONS TO BE BACK FILLED IN 10" COMPACTED LAYERS OF ABC STONE



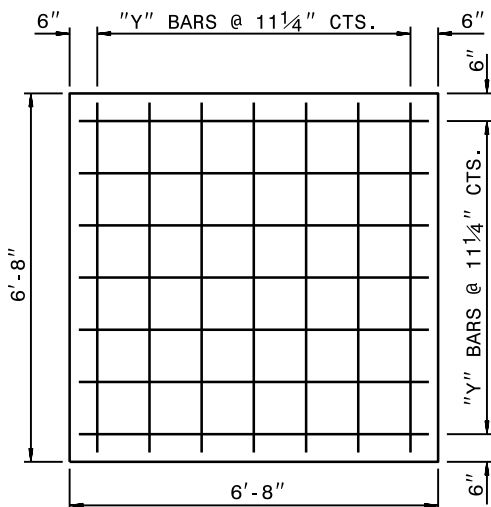
TYPICAL SECTION NO. 1

NTS

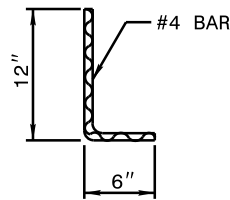
I:\CT-2021\426
 sers\Nobrown\5.DOT\DeskTop\Misc-Projects\Hertford\Catherine's Creek Rd Manhole\Final Survey\1.20461.1..BKB-PLANS.dgn
 \$USER\$



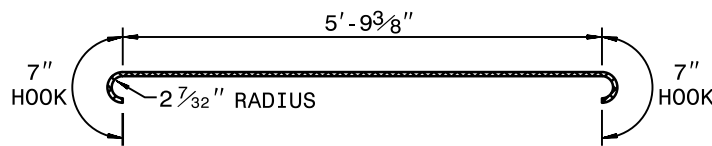
PLAN OF TOP SLAB



PLAN OF BOTTOM SLAB

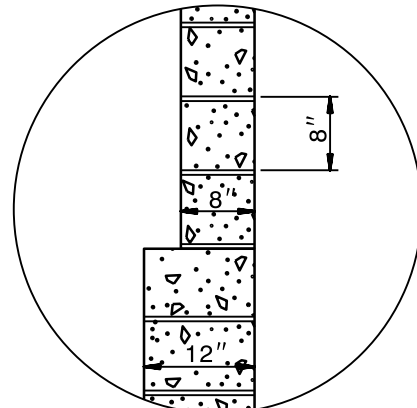


DOWEL "C"



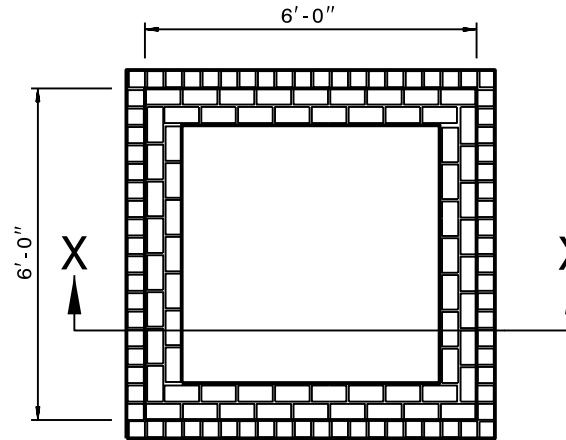
"Y" BARS

BAR DIMENSIONS ARE OUT TO OUT

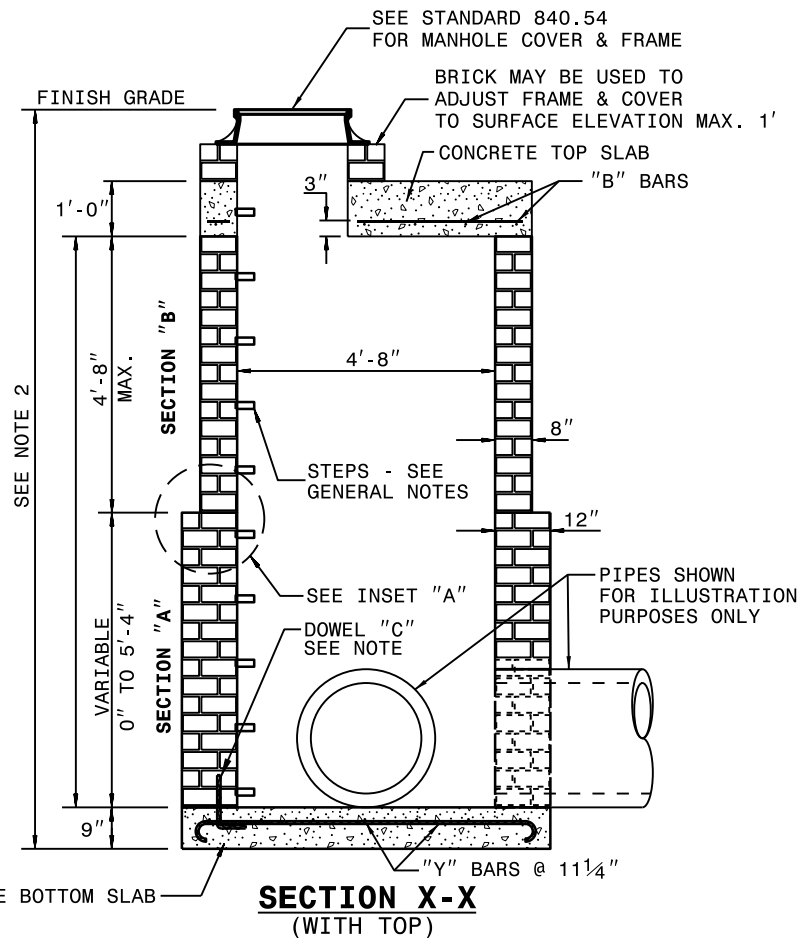


INSET "A"

CONCRETE BLOCK

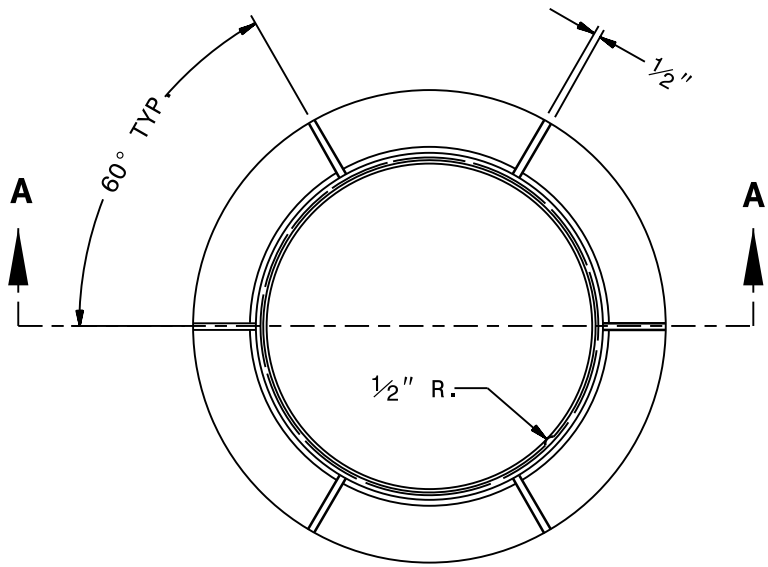


**PLAN
(WITHOUT TOP)**

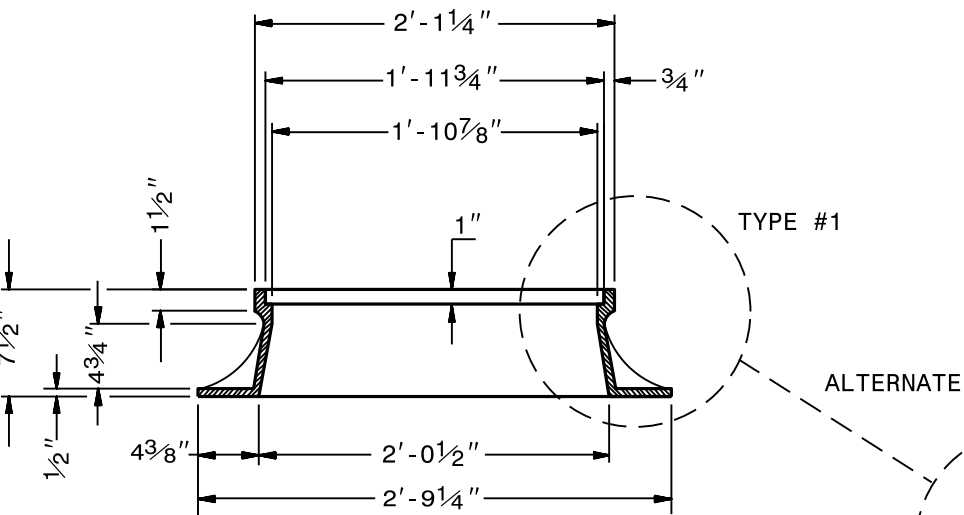


**SECTION X-X
(WITH TOP)**

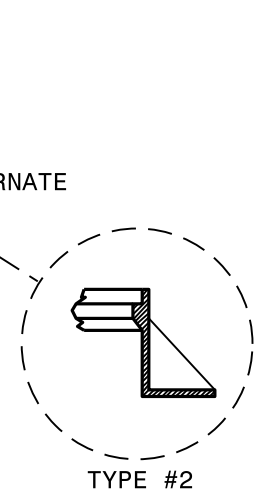
- NOTE 1: CONSTRUCT SECTION "B" OF THE PROPOSED WALL 8" THICK. AND SECTION "A" 12" THICK.
- NOTE 2: IF PROPOSED STRUCTURE EXCEEDS 12'-0" VERTICAL HEIGHT A DESIGN WILL BE REQUIRED FOR APPROVAL.
- NOTE 3: USE SINGLE MAT REINFORCING STEEL; EXCEPT DOUBLE MAT STEEL MAY BE USED IN LIEU OF HOOK BARS IN BASE SLAB.



PLAN OF FRAME

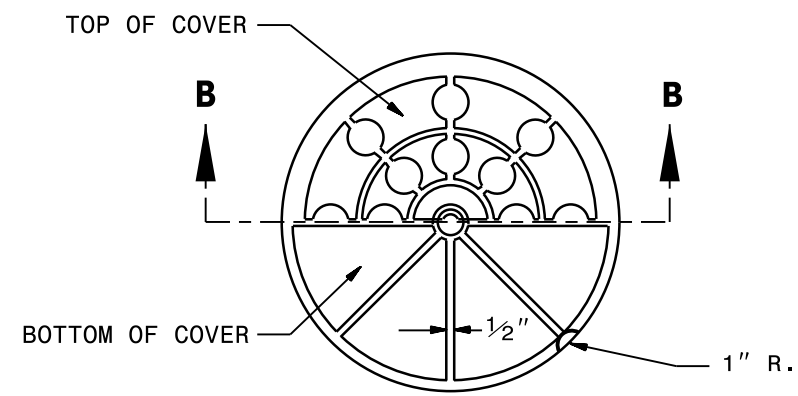


SECTION A-A

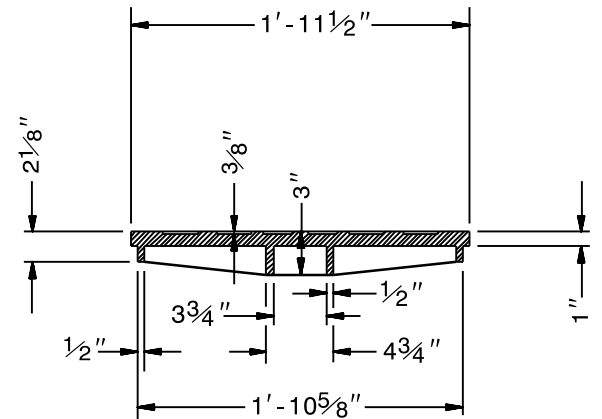


ALTERNATE

SOLID COVER SHOWN PERFORATED. PERFORATED AVAILABLE IF SPECIFIED.
 STATE USE OF SYSTEM ON COVER
 (I.E.: SEWER, STORM DRAIN, ELECTRICAL)

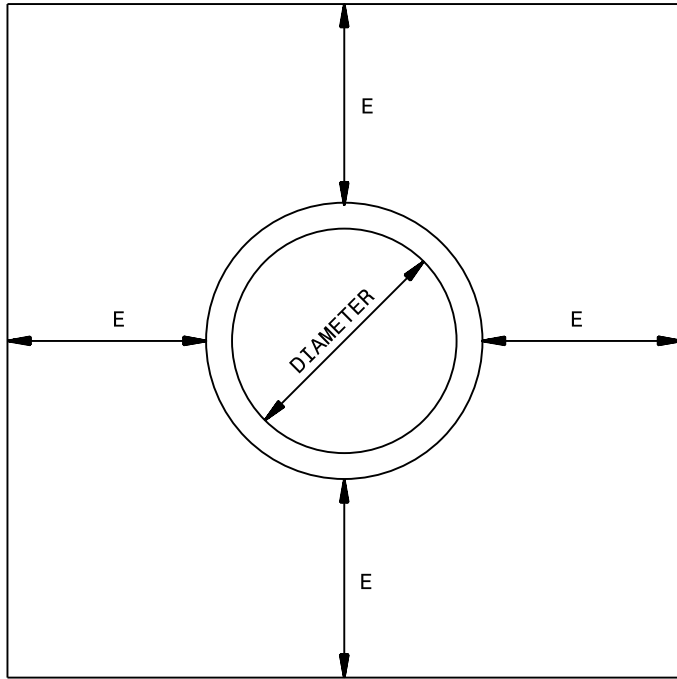


PLAN OF COVER

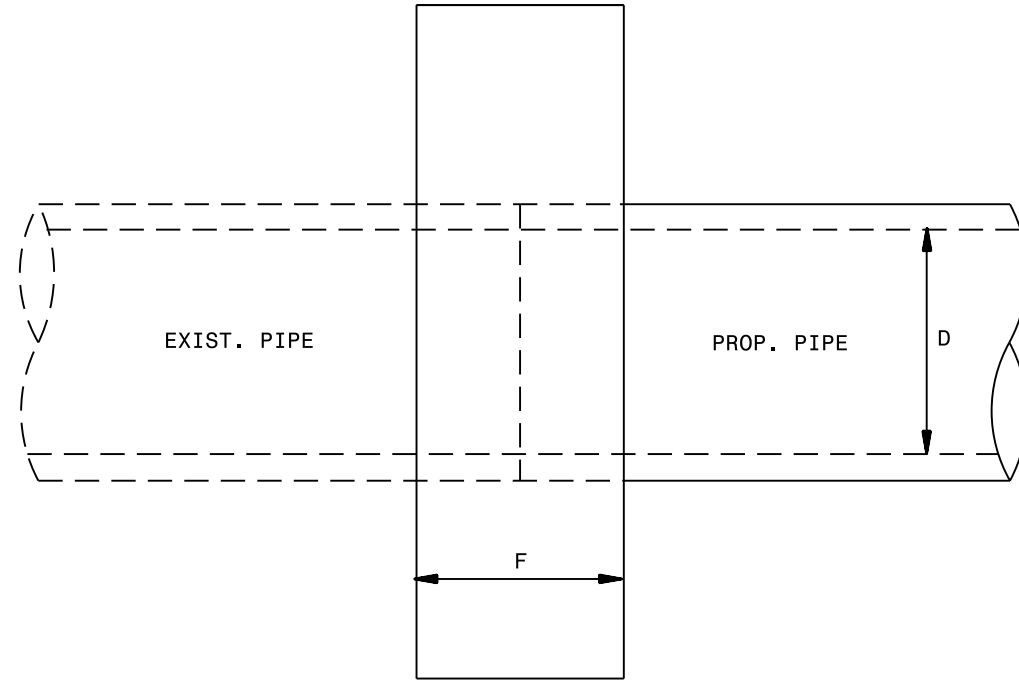


SECTION B-B

MINIMUM WEIGHTS - LBS.
 FRAME - 180
 COVER - 120
 TOTAL - 300



ELEVATION



SIDE ELEVATION

GENERAL NOTES:

USE PIPE COLLAR FOR EXTENDING EXISTING CONCRETE PIPE CULVERTS AT LOCATIONS SHOWN ON PLANS OR AS DIRECTED BY THE ENGINEER. THIS INCLUDES EXTENDING EXISTING PIPES WITH PIPES OF DIFFERENT MATERIALS.

CONSTRUCT THE PIPE COLLAR WITH CLASS "B" OR BETTER CONCRETE.

OBSERVE ALL REQUIREMENTS OF SECTION 840 OF THE STANDARD SPECIFICATIONS.

* USE 12 INCH DIAMETER VALUES FOR PIPE DIAMETERS LESS THAN 12 INCH.

D	E	F	CU. YD.
12"	12"	12"	0.3528
15"	12"	12"	0.3990
18"	12"	12"	0.4465
24"	12"	12"	0.5526
30"	12"	12"	0.6560
36"	12"	12"	0.7640
42"	12"	12"	0.8856
48"	12"	12"	1.0126
54"	18"	18"	2.5793
60"	18"	18"	2.8506
66"	18"	18"	3.1307
72"	18"	18"	3.4176

1-18

STATE OF
NORTH CAROLINA
DEPT. OF TRANSPORTATION
DIVISION OF HIGHWAYS
RALEIGH, N.C.

ROADWAY STANDARD DRAWING FOR

PIPE COLLAR

SHEET 1 OF 1

840.72